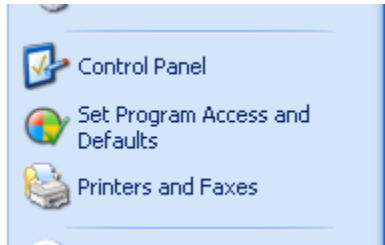


# HOW TO CHECK COMPORT SETTINGS ON WINDOWS XP

Click on Start



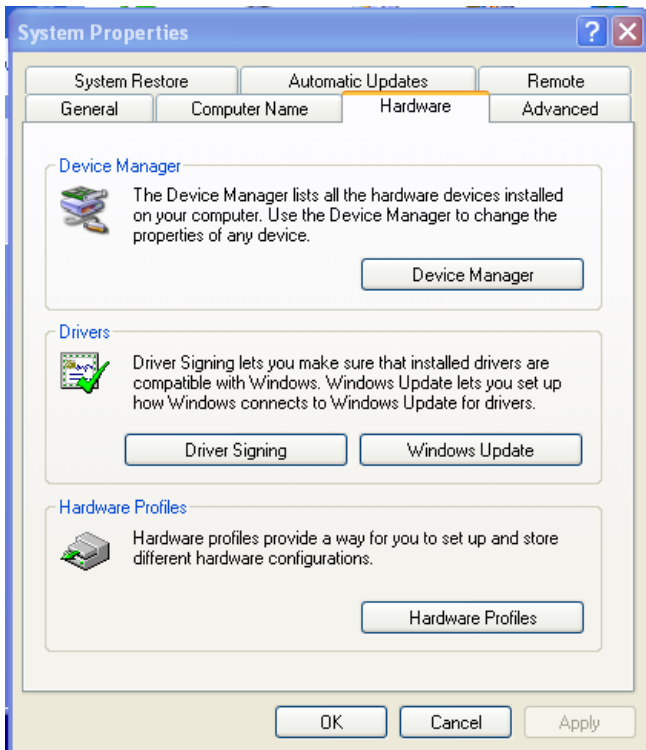
Click On Control Panel



Click On System

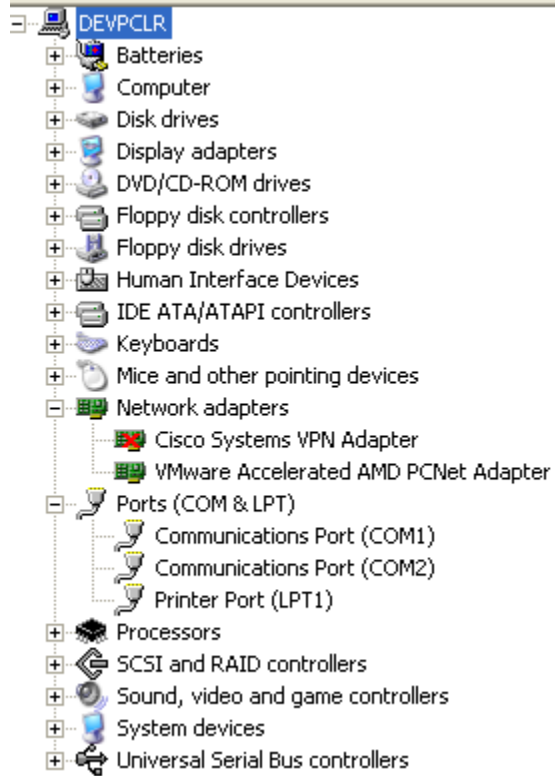


Click On Hardware Tab, then Device Manager



# HOW TO CHECK COMPORT SETTINGS ON WINDOWS XP

## Expand Ports (COM & LPT)



## HOW TO CHECK COMPORT SETTINGS ON WINDOWS XP

### Confirm setting for serial port

- Right Click On Communication Port (COM1)
- left click on Properties
- Click On Port Settings Tab

